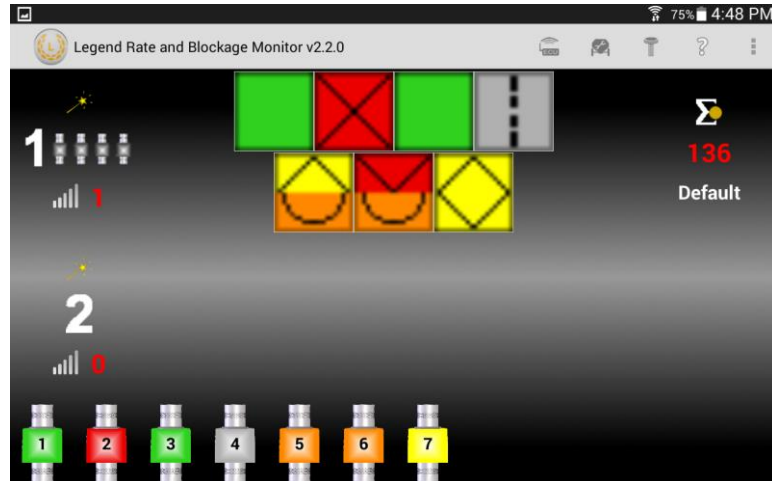


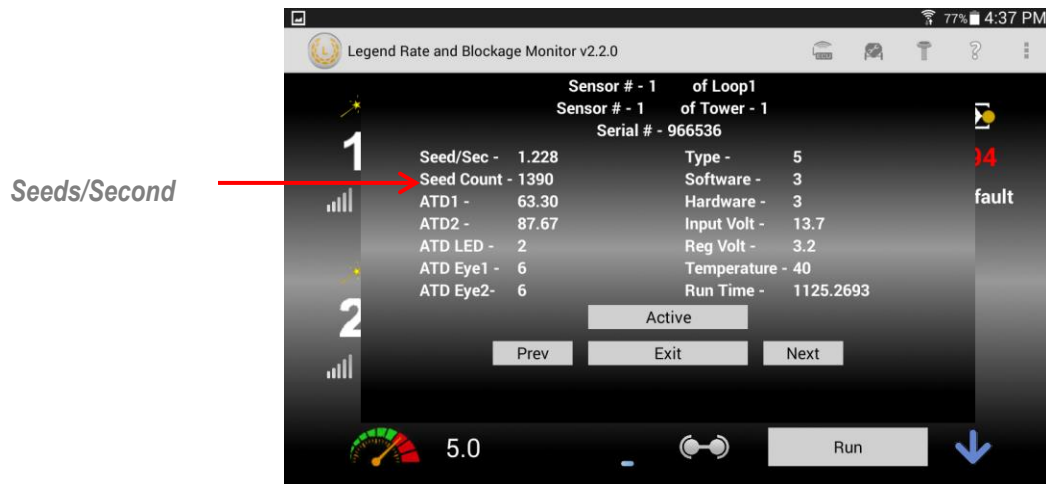
Determining Sensors Seeds/Second

To find out the Seeds/second for each sensor

1. Tap anywhere on loop 1 or loop 2 to display individual sensors at the bottom of the screen. (Provides access to sensor diagnostic screen)



2. Tap any sensor icon that you want more detailed information about.



Determining If Faulty Sensor Or Product Distribution

If there is a sensor that is constantly reading higher or lower than the rest of the sensors try moving the sensor to a different location in the drill, if the high or low alarm follows the sensor then the sensor is faulty. If you move the sensor to a different location and the alarm remains then you know the problem is related to product distribution.